



Check-valve G 3/4" CV-18-S

1. Check-valve G 3/4" CV-18-S

Check-valve of robust, compact and simple design, based on a proven and reliable technology. The spool is energized ensuring that the check-valve remains closed under low pressures up to 0.5 [bar]. Very few parts compose this check-valve; the result is a lightweight valve with a high reliability. Also, this check-valve is maintenance free and corrosion resistant.

2. Typical application

Amongst many other applications, this check-valve has specially been designed for rotary and linear stretch blow molding machines. This check-valve is, however, suitable for many other industrial applications requiring reliable check-valves with extended lifetime.

3. Technical data

Medium Filtered compressed air	Nominal size 19 [mm]
Maximum inlet pressure 40 [bar]	Inlet port size G 3/4"
Operating temperature + 5 [°C] to +60 [°C]	Outlet port size G 3/4"
Operating pressure 3 [bar] to 40 [bar]	Weight 0.29 [Kg]
Maximum air flow 1300 [Nm ³ /h]*	Maintenance Maintenance free

* Typical air flow with 40 [bar] inlet pressure

4. Materials

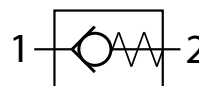
Body: anodized aluminum

Piston: synthetic material

Seal: NBR

Other: stainless steel

5. Pneumatic symbol



6. Dimensions

D1	49 [mm]
D2	G3/4"
D3	G3/4"
L	87 [mm]
S1	41 [mm]
S2	41 [mm]

