



Check valve G 1" CV-490-S

1. Check valve G 1" CV-490-S

Check-valve of robust, compact and simple design, based on a proven and reliable technology. The spool is energized ensuring that the check-valve remains closed under low pressures up to 0.5 [bar]. Very few parts compose this check-valve; the result is a lightweight valve with a high reliability. Also, this check-valve is maintenance free and corrosion resistant.

2. Typical application

Amongst many other applications, this check valve has specially been designed for rotary and linear stretch blow molding machines. This check-valve is, however, suitable for many other industrial applications requiring reliable check-valves with extended lifetime.

3. Technical data

Medium Filtered compressed air only	Nominal size 25 [mm]
Maximum inlet pressure 40 [bar]	Inlet port size G 1"
Operating temperature + 5 [°C] to +60 [°C]	Outlet port size G 1"
Operating pressure 4 [bar] to 40 [bar]	Weight 0.64 [Kg]
Maximum air flow 2200 [Nm ³ /h]*	Maintenance Maintenance free

* Typical air flow with 40 [bar] inlet pressure

4. Materials

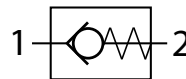
Body : anodized aluminum

Piston : synthetic material

Seal : NBR

Other : stainless steel

5. Pneumatic symbol



6. Dimensions

D1	64 [mm]
D2	G 1"
D3	G 1"
L	110 [mm]
S1	55 [mm]
S2	55 [mm]

