



Check valve G 1"1/4 CV-707

1. Check valve G 1"1/4 CV-707

Check-valve of robust, compact and simple design, based on a proven and reliable technology. No spring is used. Very few parts compose this check-valve; the result is a lightweight valve with a high reliability. Also, this check-valve is maintenance free and corrosion resistant.

2. Typical application

Amongst many other applications, this check valve has specially been designed for rotary and linear stretch blow molding machines. This check-valve is, however, suitable for many other industrial applications requiring reliable check-valves with extended lifetime.

3. Technical data

Medium Filtered compressed air	Nominal size 30 [mm]
Maximum inlet pressure 40 [bar]	Inlet port size G 1"1/4
Operating temperature + 5 [°C] to +60 [°C]	Outlet port size G 1"1/4
Operating pressure 5 [bar] to 40 [bar]	Weight 0.85 [Kg]
Maximum air flow 3200 [Nm ³ /h]*	Maintenance Maintenance free - lifetime typically exceeds 25 million cycles

* Typical air flow with 40 [bar] inlet pressure

4. Materials

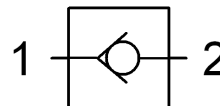
All the materials of the valve which are in contact with the compressed air are intended for use in the food processing machinery.
The material of the piston is intended for use in contact with food and is FDA compliant.

Body : anodized aluminum

Piston : synthetic material

Seal : NBR

5. Pneumatic symbol



6. Dimensions

D1	73 [mm]
D2	G 1"1/4
D3	G 1"1/4
L	120 [mm]
S1	65 [mm]
S2	65 [mm]

