



# Back-flow regulator G 1"1/2 (discharge valve) D-3203

## 1. Back-flow regulator G 1"1/2 (discharge valve) D-3203

This back-flow regulator of simple and robust design can be used in a very large number of applications. The back-flow regulator opens progressively with the increase of the upstream pressure (inlet 1), allowing to have a regulated and constant downstream pressure (outlet 2). A check-valve function is integrated to the back-flow regulator. This avoids any downstream air (outlet 2) to go back if its pressure is higher than the upstream pressure (inlet 1) when the valve is opened.

## 2. Typical application

Amongst many other applications, this back-flow regulator has specially been designed for rotary and linear stretch blow molding machines. This valve is, however, suitable for many other industrial applications requiring reliable back-flow regulators, with a high air flow capacity and an extended lifetime.

## 3. Technical data

<b>Medium</b> Filtered compressed air	<b>Nominal size</b> 32 [mm]
<b>Maximum inlet pressure</b> 16 [bar]	<b>Inlet port size</b> G 1" 1/2
<b>Operating temperature</b> + 5 [°C] to +60 [°C]	<b>Outlet port size</b> G 1" 1/2
<b>Operating pressure</b> 3 [bar] to 16 [bar]	<b>Weight</b> 5.1 [Kg]
<b>Gauge port</b> G 1/4"	<b>Maximum air flow</b> 2300 [Nm <sup>3</sup> /h]*

\* Typical air flow with 16 [bar] inlet pressure

## 4. Materials

All the materials of the valve which are in contact with the compressed air are intended for use in the food processing machinery.  
The material of the piston is intended for use in contact with food and is FDA compliant.  
The seals in contact with the compressed air are FDA compliant.  
The lubrication (during assembly) of internal parts is done with grease registered NSF class H1.

**Body** : anodized aluminum

**Piston and seal** : FDA compliant synthetic material

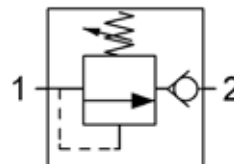
**O-rings** : NBR

**Retainer ring** : tempered spring steel

**Spring** : stainless spring steel

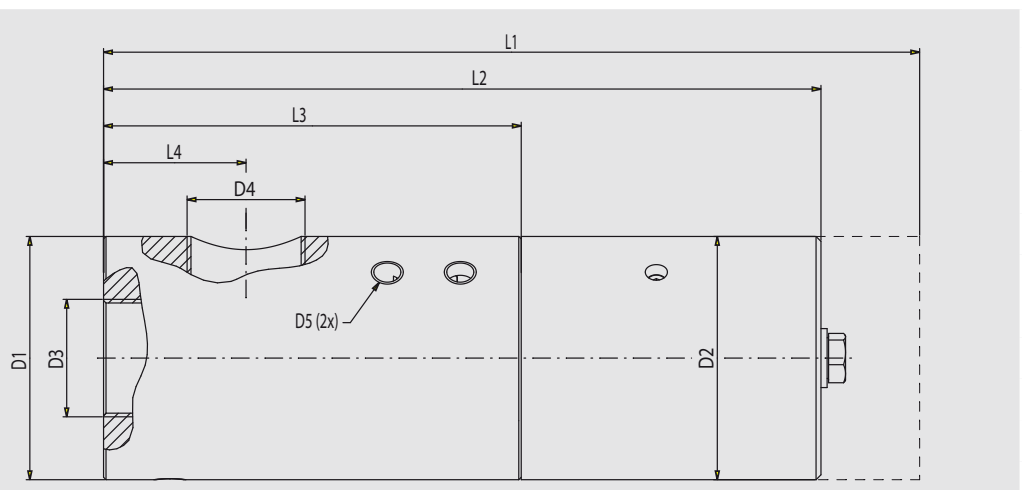
**Screws** : steel, zinc coated

## 5. Pneumatic symbol



## 6. Dimensions

D1	99 [mm]
D2	99 [mm]
D3	G 1"1/2
D4	G 1"1/2
D5	G 1/4"
L1	332 [mm]
L2	292 [mm]
L3	170 [mm]
L4	58 [mm]
L5	115.5 [mm]
L6	29.7 [mm]
A1	45 [°]



TECHNOPLAN ENGINEERING SA  
16 chemin des Aulx - 1228 Plan-les-Ouates / Geneva - Switzerland