



2/2 way valve G 3/4" V-1604

1. 2/2 way valve G 3/4" V-1604

This 2/2 way valve of simple and robust design can be used in a very large number of applications. Due to its high air flow capacity, it can easily be used, for example, as a discharge valve and in a lot of different applications requiring a two way valve. The main benefits of this 2/2 way valve are its high air flow capacity, its high reliability and its integrated check-valve function. This avoids any downstream air (outlet 2) to go back if its pressure is higher than the upstream pressure (inlet 1) when the valve is opened.

2. Typical application

Amongst many other applications, this 2/2 way valve has specially been designed for rotary and linear stretch blow molding machines. This valve is, however, suitable for many other industrial applications requiring a 2/2 way valve with a large flow capacity and extended lifetime.

3. Technical data

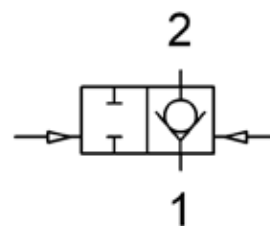
Medium Filtered compressed air	Nominal size 16 [mm]
Maximum inlet pressure 40 [bar]	Inlet port size G 3/4"
Operating temperature + 5 [°C] to +70 [°C]	Outlet port size G 3/4"
Operating pressure 3 [bar] to 40 [bar]	Weight 1 [Kg]
Maximum air flow 900 [Nm ³ /h]*	

* Typical air flow with 40 [bar] inlet pressure

4. Materials

- Body** : anodized aluminum
- Piston** : anodized aluminum
- Piston seals** : FDA compliant synthetic material
- O-rings** : NBR
- Retainer ring** : tempered spring steel
- Steel parts** : tempered steel and stainless steel

5. Pneumatic symbol



6. Dimensions

D1	64 [mm]
D2	G 3/4"
D3	G 3/4"
D4	G 1/8"
L1	143.4 [mm]
L2	128 [mm]
L3	40 [mm]
L4	39.7 [mm]

