



2/2 way valve G 3/4" V-200

1. 2/2 way valve G 3/4" V-200

This 2/2 way valve of simple and robust design can be used in a very large number of applications. Due to its high air flow capacity, it can easily be used, for example, as a discharge valve and in a lot of different applications requiring a two way valve.

The main benefits of this 2/2 way valve are its high air flow capacity, its high reliability and its integrated check-valve function. This avoids any downstream air (outlet 2) to go back if its pressure is higher than the upstream pressure (inlet 1) when the valve is opened.

2. Typical application

Amongst many other applications, this 2/2 way valve has specially been designed for rotary and linear stretch blow molding machines. This valve is, however, suitable for many other industrial applications requiring a 2/2 way valve with a large flow capacity and extended lifetime.

3. Technical data

Medium Filtered compressed air	Nominal size 16 [mm]
Maximum inlet pressure 40 [bar]	Inlet port size G 3/4"
Operating temperature + 5 [°C] to +60 [°C]	Outlet port size G 3/4"
Operating pressure 3 [bar] to 40 [bar]	Weight 0.9 [Kg]
Maximum air flow 900 [Nm ³ /h]*	

* Typical air flow with 40 [bar] inlet pressure

4. Materials

All the materials of the valve which are in contact with the compressed air are intended for use in the food processing machinery.

The material of the piston is intended for use in contact with food and is FDA compliant.

The seals in contact with the compressed air are FDA compliant.

The lubrication (during the assembly) of internal parts is done with grease registered NSF class H1.

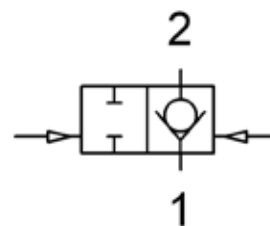
Body: anodized aluminum

Piston and seal: FDA compliant synthetic material

O-rings: NBR

Retainer ring: tempered spring steel

5. Pneumatic symbol



6. Dimensions

D1	64 [mm]
D2	G 3/4"
D3	G 3/4"
D4	G 1/8"
L1	128 [mm]
L2	55 [mm]
L3	95.5 [mm]
L4	20.5 [mm]

