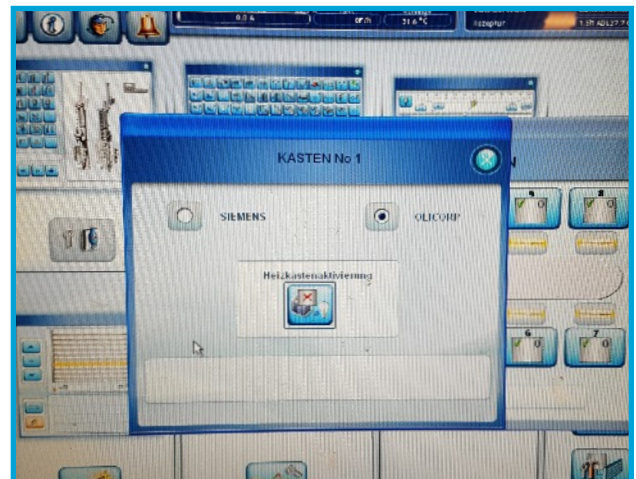
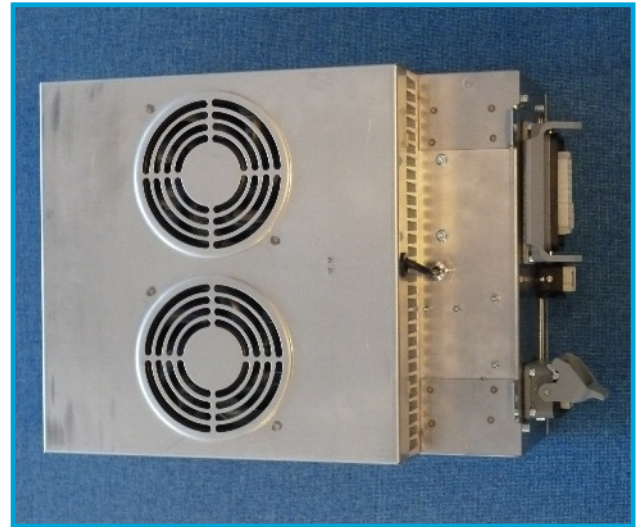
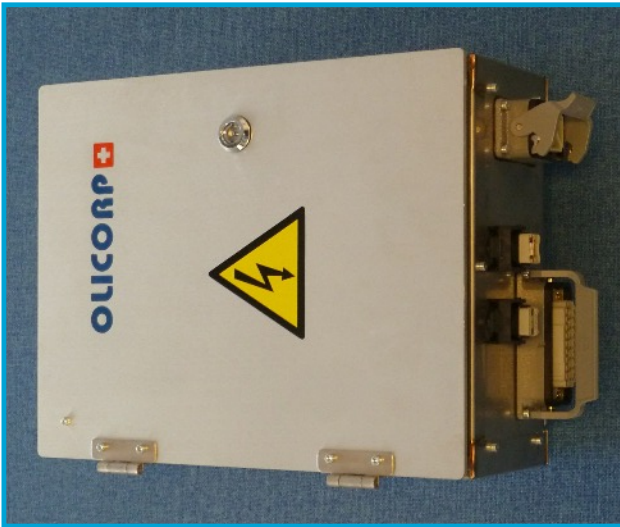


PWR-SDL and IRS oven control for Sidel Universal Repair - Reconditioning



1. Description

After a lamp breakage, the IRS or PWR-SDL regulation board may be damaged.

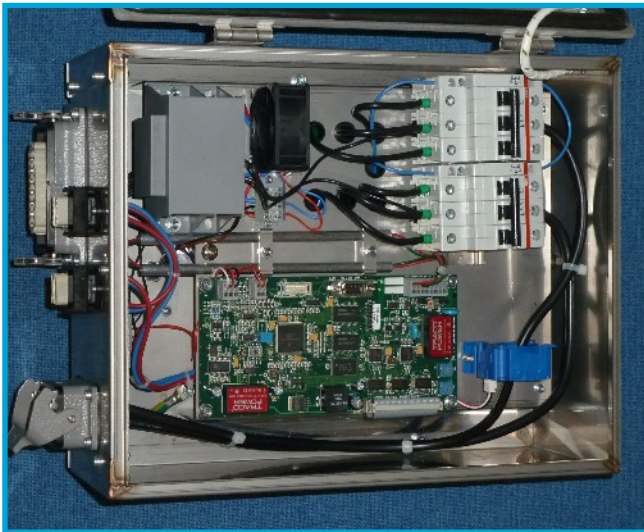
Technoplan will repair and control your IRS or PWR-SDL with original "Olicorp" parts.

This service avoids the purchase of a new control box, allowing significant maintenance costs savings.

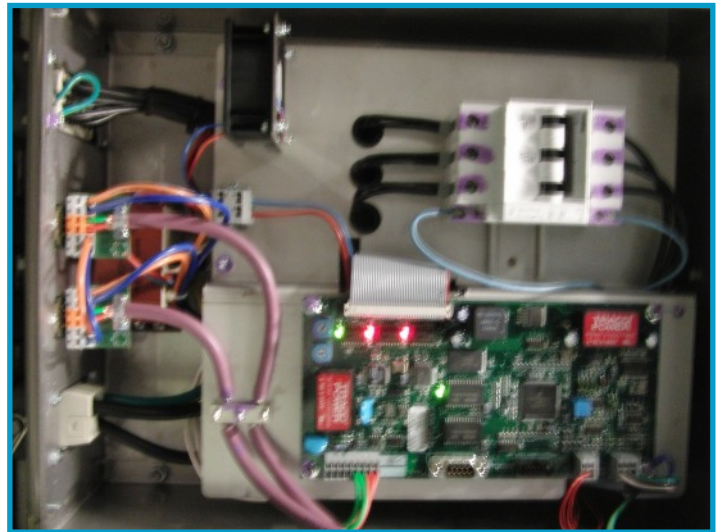
2. Procedure

1	Send the IRS or PWR-SDL to Technoplan Engineering
2	After expertise, we will inform you if PWR-SDL or IRS can be repaired (90% chance)
3	Repair and control by Technoplan Engineering
4	Return to the production site

3. Pictures



Inside the IRS cabinet



Inside the PWR-SDL cabinet

4. Dimensions (mm)

