

CV-18-S

Check-valve G 3/4" (with spring)

1. Description

Check-valve of robust, compact and simple design, based on a proven and reliable technology. The spool is energized ensuring that the check-valve remains closed under low pressures up to 0.5 [bar]. Very few parts compose this check-valve; the result is a lightweight valve with a high reliability.

2. Advantages

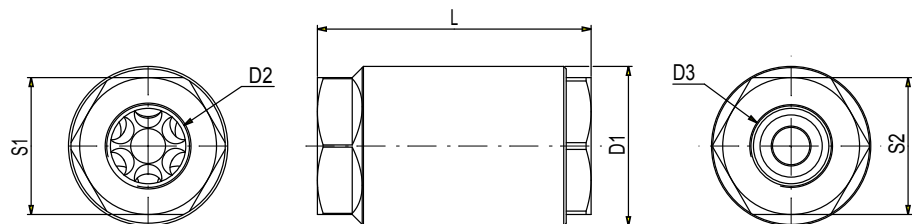
- + Easy maintenance
- + Swiss quality

3. Picture



4. Dimensions (mm)

D1	49 [mm]
D2	G3/4"
D3	G3/4"
L	87 [mm]
S1	41 [mm]
S2	41 [mm]



5. Technical Data

Reference	CV-18-S (with spring)
Function	Check-valve G 3/4"
Operating pressure	4 ... 40 bar
Maximum inlet pressure	40 bar
Nominal diameter	19 mm
Operating temperature	+5° ... +55° C
Inlet port size	G 3/4"
Outlet port size	G 3/4"
Maximum air flow	1300 [Nm ³ /h]
Materials	Body : Coated aluminium Spool : Plastic, FDA compliant
Net-Weight	0.29 kg